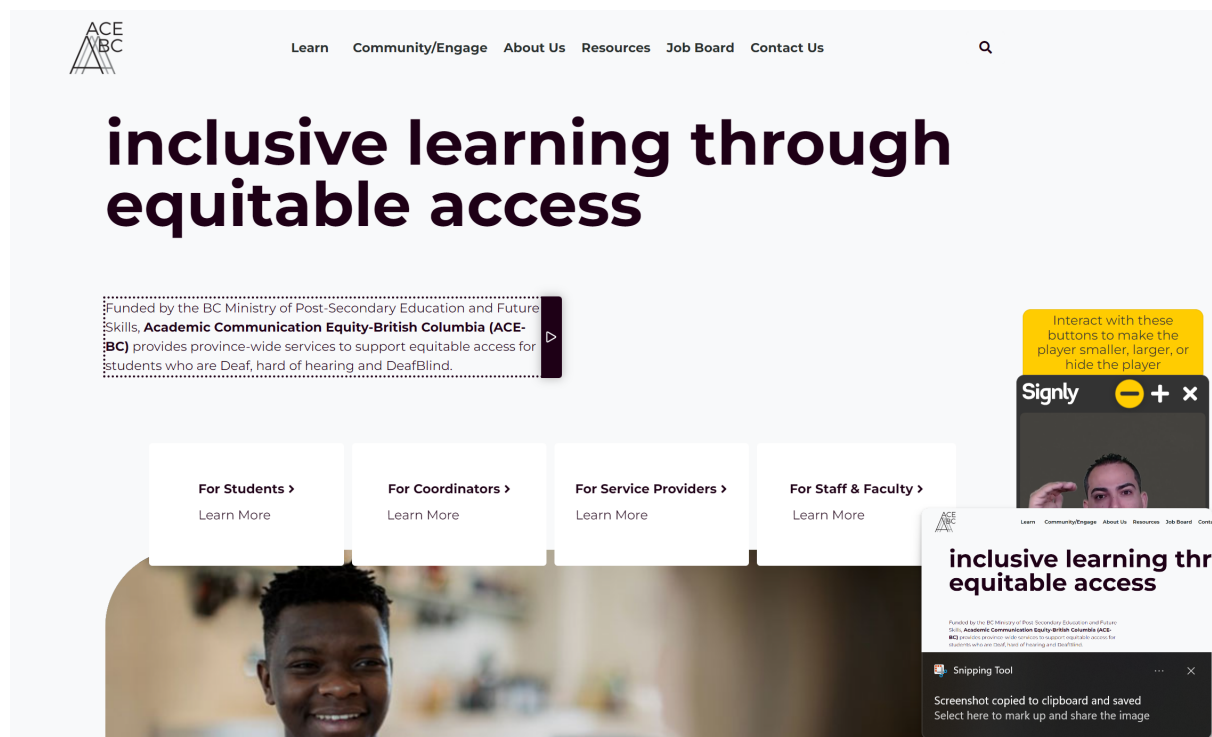


## Academic Communication Equity-British Columbia (ACE-BC) Empowers Users with Signly Integration on Its Website and Learning Management System

[Burnaby, Date] - ACE-BC, a leading organization dedicated to promoting academic communication equity for individuals with hearing loss, is excited to announce the integration of Signly, a groundbreaking accessibility tool, on its website. This implementation marks a significant step forward in ACE-BC's mission to ensure that every student and academic community member has equal access to information and resources.

Signly is a cutting-edge technology platform that enhances website accessibility for individuals who communicate using sign language. By incorporating Signly into its website, ACE-BC is furthering its commitment to inclusivity and providing a more inclusive experience for its users who use sign language as their primary means of communication.



Click play to see Signly in action or visit <https://ace-bc.ca/>

The Signly integration on ACE-BC's website opens up a range of opportunities for deaf individuals who use sign language, allowing them to engage with the content and resources available on the site. With Signly, users will be able to access sign language translations of key information, instructions, and materials, ensuring they have equal access to the same educational opportunities as their peers.

"We are thrilled to introduce Signly on the ACE-BC website and Learning Management System," said Deloris Piper, Program Coordinator at ACE-BC. "Our organization is committed to eliminating barriers and creating an inclusive academic environment. By incorporating Signly, we are taking a significant step towards achieving academic communication equity for Deaf individuals."

With the Signly integration, ACE-BC is leading the way in implementing innovative solutions to address the challenges faced by the ~~hearing-impaired~~ Deaf, hard of hearing and Deaf-Blind community. By embracing technology and prioritizing accessibility, ACE-BC is setting an example for other academic institutions and organizations across British Columbia.

To experience Signly on the ACE-BC website, users can look for the Signly icon and click to activate the sign language feature. Once activated, users will be able to access sign language videos

synchronized with the website's content, empowering them to navigate the site with ease and confidence.

Registered users can access learning materials in both ASL and English.

*ACE-BC has been a great collaborator in supporting Deaf and Hard of Hearing post-secondary students in the services that they offer. One of their highlights has been their website which has ASL translation to make information accessible to Deaf-ASL users. They have set up high standards to make their service inclusive for Deaf and Hard of Hearing clients which paves the road for others to do the same!*

Melissa Mykle, Team Leader at Provincial Deaf and Hard of Hearing Services

*Sarah Anne Hrycenko, Procurement Advisor/RRU MBA Candidate said “Ace-BC offers an exceptional resource and service for both youth and adults pursuing post-secondary education. As someone who has experienced their support firsthand, I can confidently say that ACE-BC is a valuable service along with Provincial Deaf and Hard of Hearing Services Youth Transition services. I highly recommend ACE-BC for its outstanding commitment to assisting students in their educational journey.”*

ACE-BC remains committed to its ongoing efforts to foster inclusivity and equitable access to education for all individuals. The integration of Signly on the organization's website is just one of many initiatives ACE-BC has undertaken to ensure that every student, advisor, partner and community member has an equal opportunity to thrive academically.

For media inquiries or more information about ACE-BC and the Signly integration, please contact:

Deloris “Piper” Piper

Program Coordinator  
604-432-8301  
Piper@ace-bc.ca

About ACE-BC:

Academic Communication Equity-British Columbia (ACE-BC) is a leading organization dedicated to promoting academic communication equity for individuals who are Deaf, DeafBlind or hard of hearing within the Ministry of Post-Secondary Education and Future Skills, Accessibility Supports Framework. ACE-BC works closely with academic institutions, educators, and stakeholders to identify barriers and implement inclusive solutions that ensure equal access to education for all students.